



# Setting Targets

## Being conservatively ambitious



Fiona Callen  
Impact Analyst  
ChildFund New Zealand



# Indicators and Targets

An indicator shows what we are measuring

An anecdotal statement

A target is the result we are expecting

**1**

**ERADICATE EXTREME POVERTY AND HUNGER**

**2**

**ACHIEVE UNIVERSAL PRIMARY EDUCATION**

**3**

**PROMOTE GENDER EQUALITY AND EMPOWER WOMEN**

**4**

**REDUCE CHILD MORTALITY**

**5**

**IMPROVE MATERNAL HEALTH**

**6**

**COMBAT HIV/AIDS, MALARIA AND OTHER DISEASES**

**7**

**ENSURE ENVIRONMENTAL SUSTAINABILITY**

**8**

**GLOBAL PARTNERSHIP FOR DEVELOPMENT**

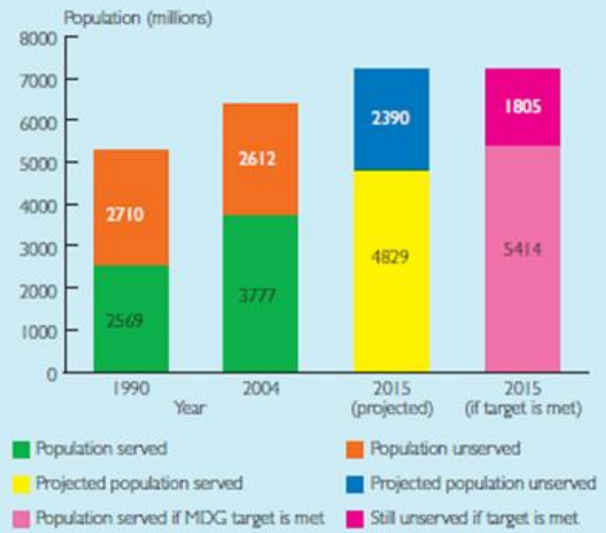
# Millennium Development Goals

1

Selected targets to be met by 2015

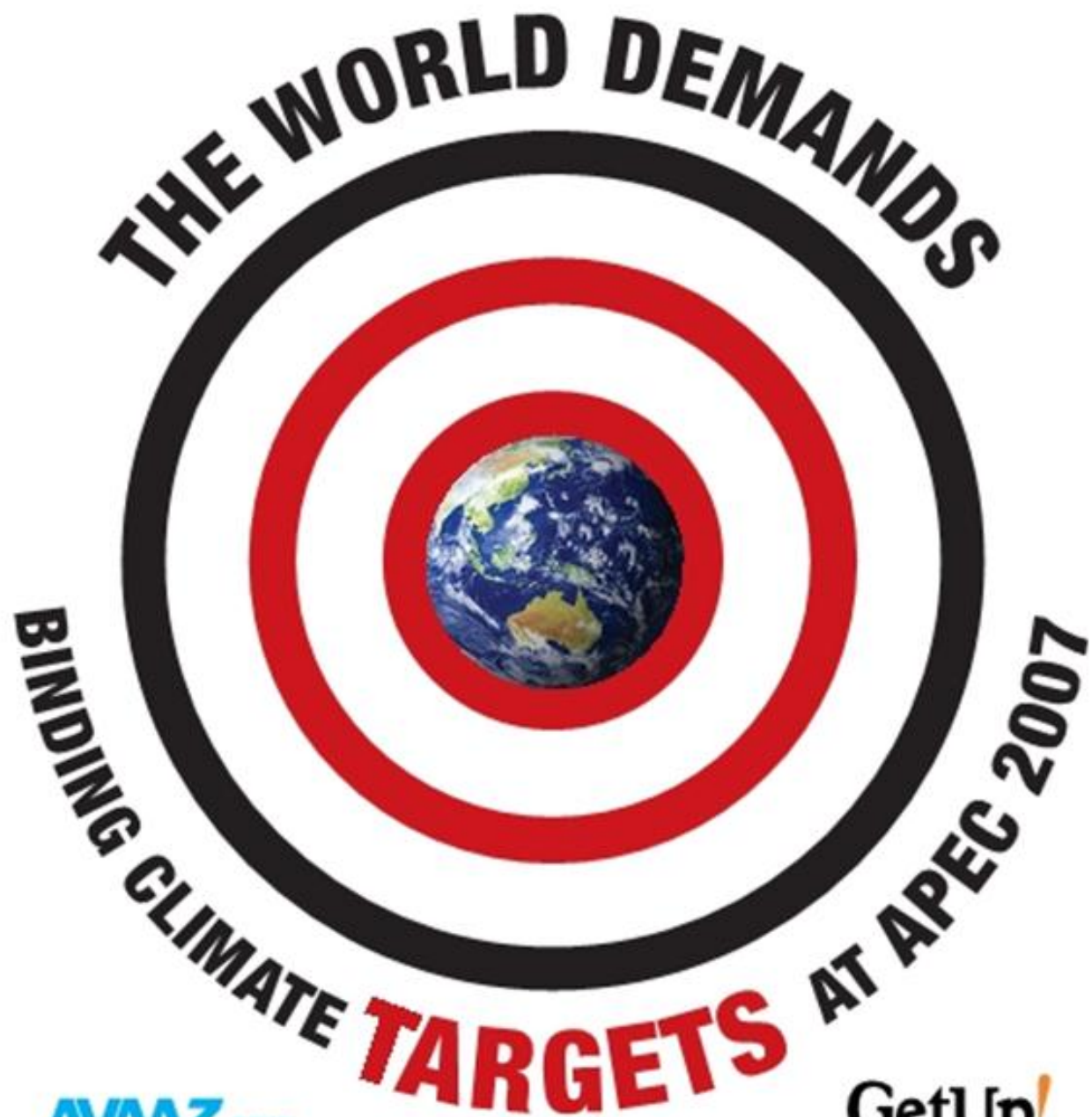
- Halve the proportion of people living on less than \$1.25 a day (at purchasing-power parity)
- Ensure all children complete primary school
- Educate boys and girls equally
- Reduce the mortality rate among children under five by two-thirds
- Reduce the maternal mortality rate by three-quarters

World population with and without access to improved sanitation in 1990, 2004 and 2015



- > The number of people without improved sanitation decreased by only 98 million between 1990 and 2004.
- > The global MDG sanitation target will be missed by more than half a billion people if the trend 1990–2004 continues up to 2015.

spread of HIV/AIDS, ...  
 ses  
 e without access to  
 ernance

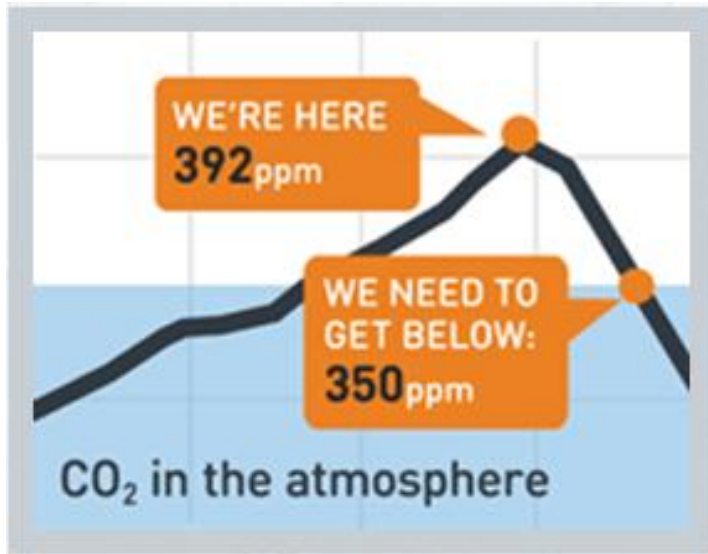


**AVAAZ.ORG**  
THE WORLD IN ACTION

**GetUp!**  
Action for Australia



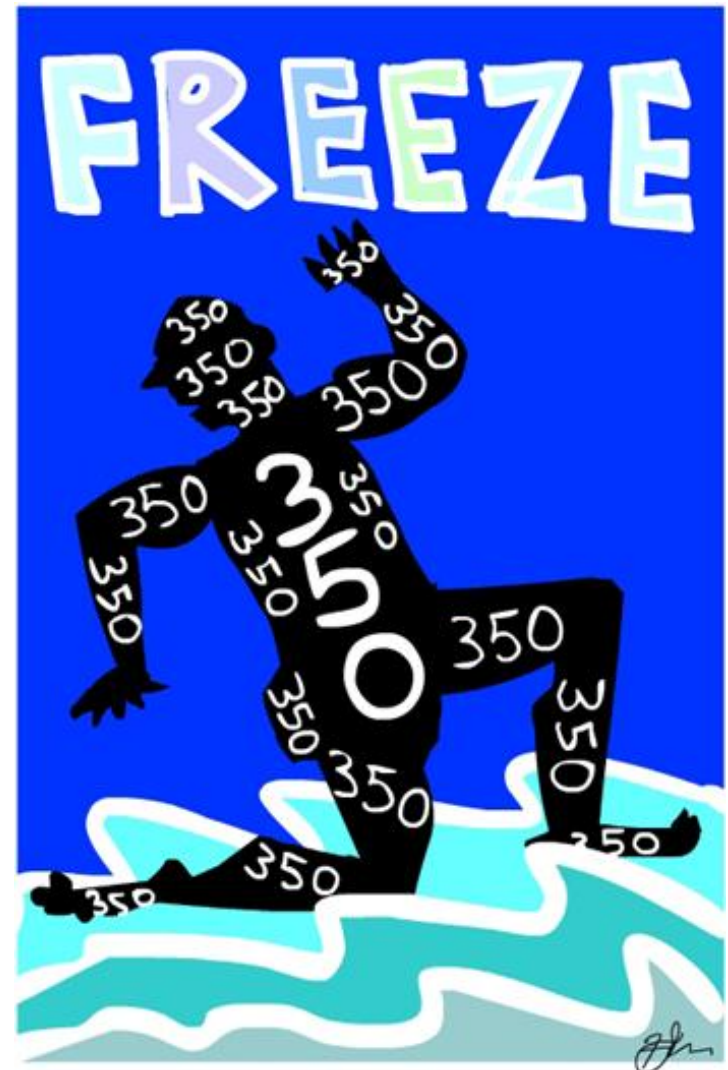
# Targets are how we ultimately judge success



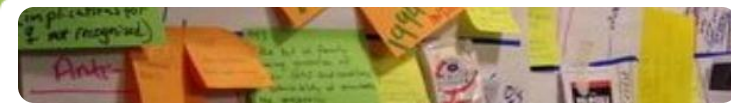
## 2 degrees



That's the amount the planet will be allowed to warm. Leaders of the world's eight richest economies have agreed to the historic deal setting 2 degrees Celsius as the maximum limit for global temperature rise.

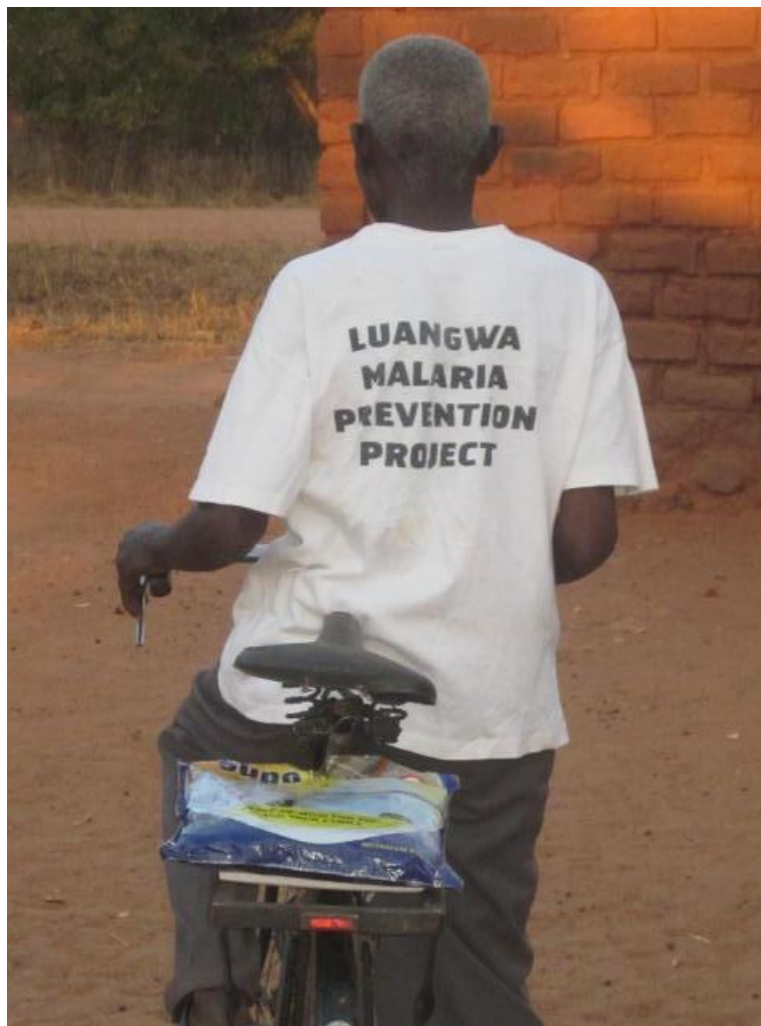




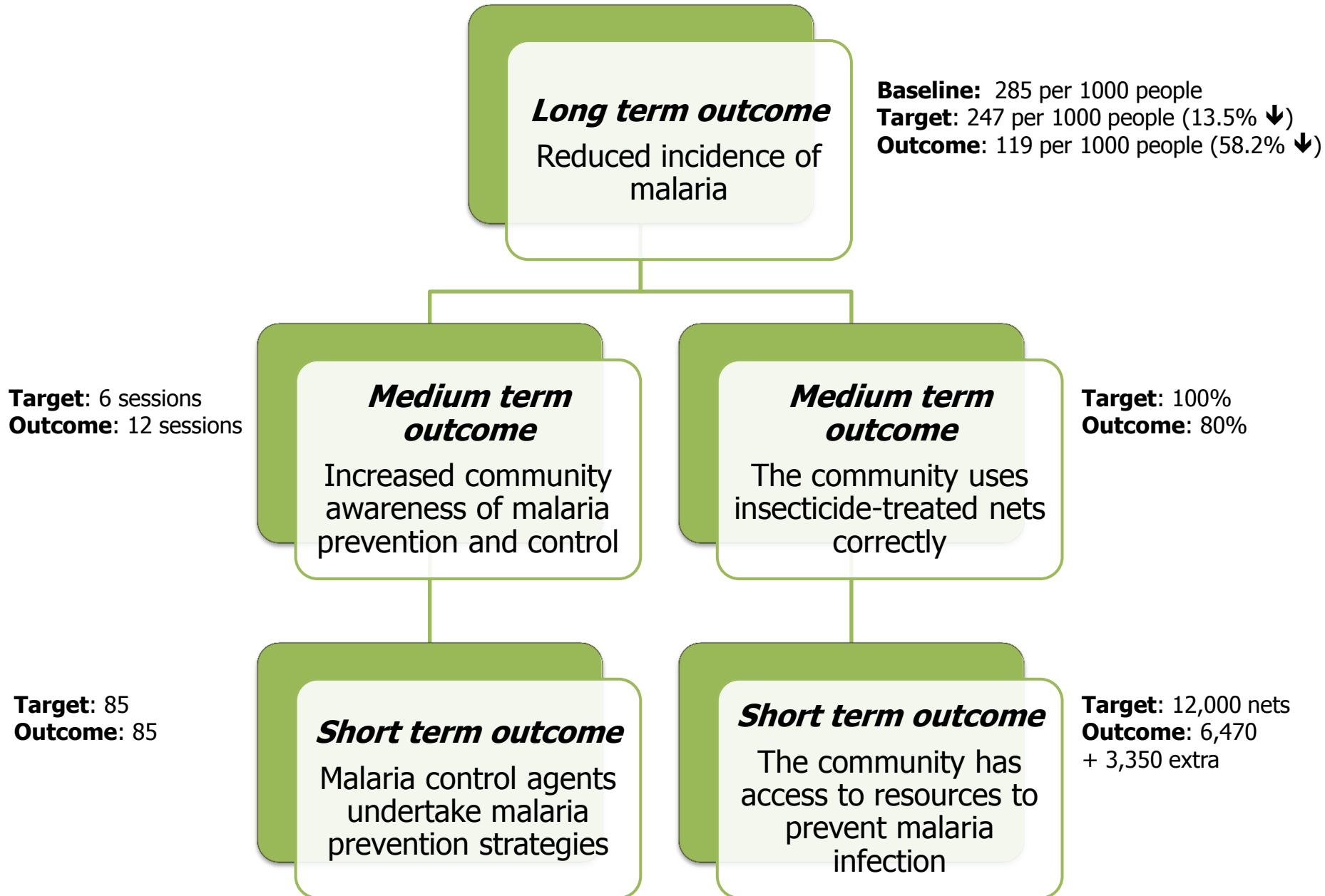




## Community Goal: Reduce malaria incidence to 150 per 1000 people by 2014









# Questions

- Pressure on partners?
- Outputs versus outcomes?
- Distortion?
- Too conservative?
- Too ambitious?
- Confounding variables?
- Baseline outdated?



# Implications for Policy and Practice

- Participatory process that requires balancing of expectations
- Flexibility is crucial
- Adopt a target range
- Mid-term reviews
- Consider the importance of outputs and outcomes in the context



Thank you

